

 GAZCO
eMotiv
electric fires





A fire that **moves you**

The Gazco eMotiv beautifully transforms any space, marrying elegance with effortless style. Designed for seamless integration into existing fireplace openings, its innovative tapered design simplifies installation. Available in three sizes, each model offers a selection of captivating flame effects and the latest Chromalight® technology, creating a mesmerising, living ember bed that elevates your décor.

Front cover image: eMotiv 84, shown with integrated bottom trim removed for hearth-mounted installation



Experience the eMotiv

To truly experience the eMotiv's realistic flame and enchanting lighting effects, view our showcase videos online.



Watch the video at [gazco.com/emotiv](https://www.gazco.com/emotiv)



eMotiv 84



Key Features

- Three sizes available
- Integrated 3 or 4-sided frame
- Chromalight® Immersive LED system
- Lifelike flame visuals and pulsing glowing ember bed
- Up to 2kW programmable heating
- Three different flame options: Amber, Amber with Blue accent, and Blue
- Eight ember bed up-lighting colours and Spectrum Mode
- Ultra-realistic glowing Oak log and ember effects
- Authentic log guard
- Tapered firebox design for easy slot-in installation
- Suitable for inset or hearth mounted installations
- Programmable Thermostatic Eco Remote Control
- App control (see page 8)
- Enjoy with or without the heat
- Ecodesign Energy Saving Features (see page 8)



The eMotiv Effect

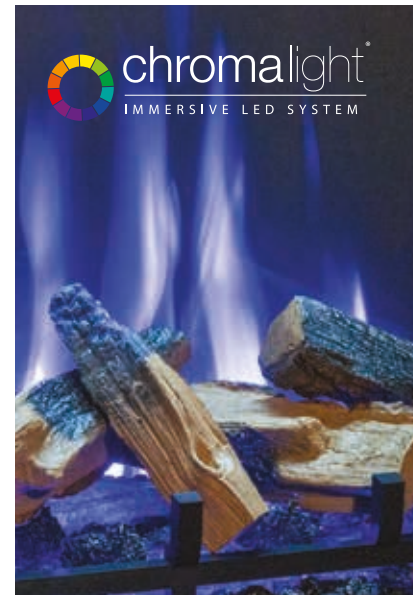
The eMotiv enchants with its stunningly realistic Oak log and ember visuals, beautifully complemented by a palette of adjustable lighting effects designed to set the perfect mood. Revel in the warm glow of lively flames or bask in the gentle ambience of a softly lit ember bed - each setting crafted to enhance your relaxation and enjoyment, with or without heat.

▶ Watch the video: gazco.com/emotiv



Ultra-realistic glowing Oak log and ember effects

The eMotiv features a stunningly realistic Oak log fuel-effect inspired by our heritage in crafting premium quality woodburning stoves and fires.



For the utmost realism, sections of the log-effects glow when the eMotiv's flame and fuel bed are activated, to create the illusion of real burning logs. Specially designed ember log pieces and blackened glass media complete the ensemble, mimicking the aesthetic of a real ember bed.

eMotiv models also feature discreet downlighting, designed to complement the various flame choices, adding to the immersion.

Immersive ember bed up-lighting

The eMotiv's Chromalight® up-lighting system illuminates the fire's fuel bed from below, creating a natural pulsing effect which brings the spectacle to life. Select from a palette of eight colours designed to suit your mood. Promote relaxing vibes with a natural amber glow, express yourself with one of the many vibrant hues, or mix it up entirely with the gradually changing spectrum mode.

Enjoyment with or without the heat

With a 2kW thermostatic heating system, the eMotiv can be programmed to warm your living room to a pre-set temperature. Take full control over the heat output, or simply 'set and forget' your desired temperature and let your eMotiv intelligently manage the heat for you. You can also choose to enjoy the eMotiv solely for its flame and lighting effects without any heat at all, if desired.

Ecodesign Compliant

The eMotiv's innovative energy saving features (see page 8) make it compliant with stringent Ecodesign energy product standards.



WIN THE COST OF YOUR PRODUCT BACK!*

by registering your eMotiv online for your free extended warranty. See page 13 for details.

eMotiv 74, shown with integrated bottom trim removed for hearth-mounted installation.

Ease of Installation

Designed and engineered for a quick and cost-effective installation, the eMotiv excels at modernising existing fireplace openings whilst minimising building work.



Tapered Firebox Design

All models feature an inspired tapered firebox design, allowing them to slot into existing chimney openings with ease, or inset into a bespoke wall solution.



Plug and Play

Once installed, getting up and running requires little more than plugging the eMotiv into a power socket, before enjoying the enhanced ambience it brings to your space.

Sizes and Framing

The eMotiv range offers three sizes of electric fire, providing options to suit a variety of living spaces.

eMotiv 64

Product Code: 210-364



Dimensions* (WxH)

4-Sided Frame	687 x 477mm
3-Sided Frame	687 x 457mm

eMotiv 74

Product Code: 210-390



Dimensions* (WxH)

4-Sided Frame	789 x 554mm
3-Sided Frame	789 x 534mm

eMotiv 84

Product Code: 210-414



Dimensions* (WxH)

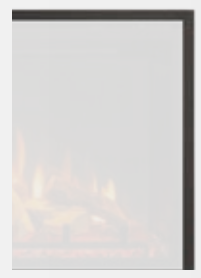
4-Sided Frame	890 x 655mm
3-Sided Frame	890 x 635mm

Integrated Framing Options

The eMotiv's integrated frame ensures a sleek, hole-in-the-wall look with a crisp finish, concealing any plastering imperfections around the installation opening. The frame can be configured as 4-sided or 3-sided, with the bottom trim easily removed, catering for a variety of installations.



4-sided Frame



3-sided Frame

*Dimensions given are those overall visible upon installation. For more detailed technical information, please see page 12.

Complete Control

eMotiv electric fires offer full control over the array of ambient effect, heating capabilities, and Ecodesign energy-saving options via the Thermostatic remote handset, or a companion app that can be found on the App Store and Google Play.

Flame Options

Achieve the perfect ambience with a choice of three flame colours, including amber, amber with blue accent, or blue. Five brightness settings allow you to create a bespoke visual to suit your mood.

Ember Bed Up-lighting

The eMotiv's authentic glowing ember bed is brought to life by immersive Chromalight® up-lighting LEDs, which pulse to create an alluring display. Choose from eight colours to either match or contrast with the flames. To liven the mood, there's also a spectrum mode which gradually cycles through all the colours, as well as adjustable brightness.

Thermostatic Heating

Set your ideal room temperature and let the eMotiv take care of the rest. Choose a temperature of up to 35°C, and the eMotiv's 2kW heater will adjust its power to achieve your desired warmth as efficiently as possible.

Open Window Detection

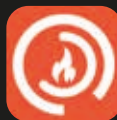
Should the eMotiv detect a drop in ambient room temperature of 4°C within eight minutes, such as when a window is left open, the fire's heater will automatically turn off to save energy. Heating can be easily resumed with the remote control or app.

Daily and Weekly Programming

Using the app, set your eMotiv's heat and lighting functions to turn on according to a daily and weekly schedule, independently of each other. Enjoy heat, flame only, or both at certain times of the day, or even days of the week, with four daily time periods and multiple weekly programmes available. What's more, the eMotiv's Adaptive Start feature allows the fire to turn on up to 45 minutes in advance of the scheduled time to reach the desired room temperature, ready for when you to sit down and relax.



Download the app using the QR code, or search for **MusFlame on the App Store.**





Gazco Pedigree

When you choose Gazco, quality and technology are assured. From contemporary media wall fires to traditional stoves, Gazco are committed to creating the ultimate in flame effect fires. Our research and development laboratories are amongst the most advanced in the industry, ensuring that the very latest innovations are incorporated into our products.



Options for every home

Gazco is part of the Stovax Group who offer a prestigious product range, which includes everything from the traditional to the ultra-contemporary in a wide array of styles and sizes. Whether your choice is solid fuel, gas, or electric you can be sure to find a stove or fireplace from our range to add the perfect warmth and character to your home. Full details of the Stovax Group's range of products can be found at:

www.gazco.com

Gazco is an ISO9001 and ISO14001 accredited company. Our rigorous quality control system ensures that all our appliances are safety checked and that they comply with the appropriate regulations with

all fires in this brochure bearing the UKCA & CE marks.

Similarly, our environmental management systems ensure we work in a sustainable manner, whilst endeavouring to protect the environment by minimising any possible impact from our operations.



Award-winning Manufacturer

We are proud to have been recognised as an award-winning manufacturer, for our high-quality products and innovative technology.

Find out more at gazco.com/awards



Find your retailer

You can find and support your nearest retailer by visiting:

www.gazco.com/retailers

Expert Retailer Network

We take great care to ensure that our fires are designed, tested and manufactured to the highest possible quality and safety standards. We are just as concerned to make certain that they are sold and installed correctly so that you will enjoy years of pleasure from your purchase.

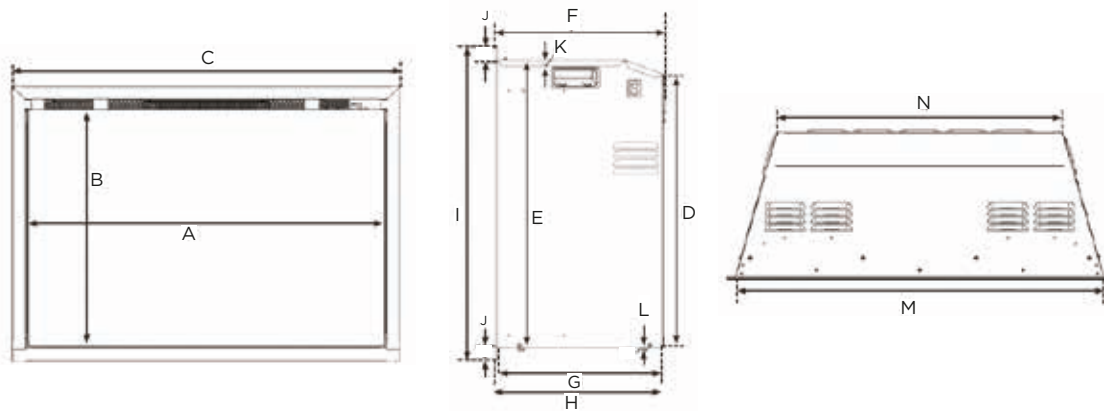
Accordingly, you will find our eMotiv range is exclusively available from our experienced, independent retailers' showrooms. They will be happy to show you a selection of models in your local showroom and answer any questions you might have. These independent retailers will discuss your individual requirements covering both technical requirements and design, to ensure that you select the most appropriate product for your home. They will also be able to advise on, or assist with, the installation process as well as help provide any after-sales support and servicing your appliance may require in the future.

Whilst we encourage our retailers to promote fireplace products and their outlets via the internet, we do not believe suitable levels of customer care and satisfaction can be obtained from purchasing the product only online. We would strongly recommend that you consider this when undertaking your research and making a purchasing decision. Furthermore, please be aware that we do not offer technical support (beyond our statutory responsibilities) to products bought via nationwide online sales, where this support would normally be offered by one of our qualified, independent retailers.

In addition, Gazco fires purchased from within our Expert Retailer Network will have the additional benefit of an extended warranty period, subject to terms and conditions. Full details can be found at:

www.gazco.com

Further Information



Dimensions (mm)

	A	B	C	D	E	F	G	H	I	J	K	L	M	N	Weight
eMotiv 64 (210-364)	627	403	687	407	432	302	295	298	477	20	11	6	648	478	27.8Kg
eMotiv 74 (210-390)	729	479	789	482	508	302	295	298	554	20	11	6	750	580	33.8Kg
eMotiv 84 (210-414)	830	581	890	574	610	337	327	330	655	20	11	6	851	661	40.8Kg



eMotiv 74

Warranty Information

Your Gazco retailer will provide you with a Two Year Warranty for your new electric fire providing it is registered with Gazco. Please note this warranty excludes certain consumable parts. Fires purchased outside of Gazco's Expert Retailer Network will carry a standard 1 Year non-extendable Warranty, or minimum statutory warranty for your country.



Full warranty details, terms and conditions are available at: www.gazco.com

Photography Information

Gazco pursue a policy of continuous product improvement, therefore, whilst our products are correct at the time of the photography, we reserve the right to make alterations and amendments.

Exact product details should be discussed with your retailer at the time of purchase.

How little does it cost to run a Gazco eMotiv electric fire?

With their innovative energy saving features, Ecodesign compliance, and programmable thermostatic heat, an eMotiv fire is the perfect zonal heating solution. By heating just the room in use, rather than the whole house, you could potentially lower your heating costs. For example, the eMotiv 84 could cost as little as £1 per evening* for heat and flame effects.



eMotiv Electric Range†

- ✓ Input: 1.0kW (low), 2.0kW (high)
- ✓ Output: 1.0kW (low), 2.0kW (high)
(depending on usage of heat & effects)
- ✓ Enjoy with or without heat
- ✓ Easy Installation

Cost per evening*

1p

(flame effect only)

Cost per evening*

£1.00

(heat & flame effect)

Example Running Costs

4 Hours	Flame effect only	1p
1 Hour	on low continuous heating	25p
1 Hour	on high continuous heating	49p
4 Hours	on thermostatically maintained heating*	£1.00

*Based on running the fire for 4 hours, with heat on for 50% duty cycle due to thermostatic control, and flame effects for the full duration. Based on the average mainland UK cost per unit of electric (including VAT) from 1st October 2024, for customers on the default tariff. Figures generated are for typical domestic consumption paying by direct debit and will vary based on actual household usage (24.50p per kWh, OFGEM, Energy Price Cap, <https://www.ofgem.gov.uk/energy-price-cap>). Does not include any costs relating to product maintenance and servicing. Prices rounded to nearest whole pence. To the best of our knowledge all content is accurate at the time of going to print (24/10/24). E&OE. †Figures based on the eMotiv 84 Electric Fire. For Northern Ireland and Republic of Ireland pricing, visit www.gazco.com/howlittle

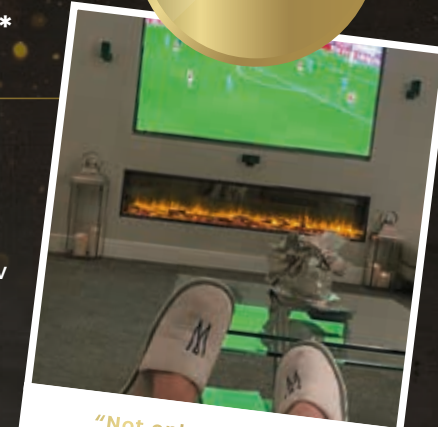
WIN

THE COST OF YOUR PRODUCT BACK!*

PREVIOUS WINNER!

For further home inspiration you can view real life installations at our Customer Showcase page and share your thoughts and photos of your new stove or fire installation to enter our draw!

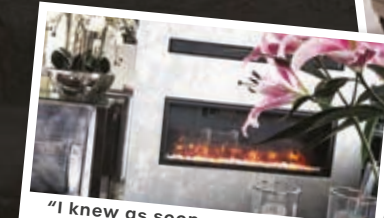
- We will publish your entry on our Customer Showcase
- You will be entered into a draw for the chance to win the cost of your product back
- **Gain a second entry** by registering your product online for your free extended warranty at gazco.com/registration



"Not only do I have a wonderful product, but they refunded the cost - in full!"



"I'm beyond happy with it"



"I knew as soon as I saw it that was the one for our living room"

View real life installations and submit your review at:
gazco.com/customershowcase

*Terms and conditions apply. See online for details.

Other electric ranges available



Onyx Fusion Electric 150RW, installed as a single-sided fire and shown with optional mood lighting kit



Gazco eStudio 60R with Optional Birch log-effect and Claremont Limestone Mantel

In addition to the captivating eMotiv, our range of electric fires also proudly features the Gazco eReflex and eStudio, along with the Avanti and Fusion from our premium Onyx brand.

Designed to provide a spectacular focal point for any feature or media wall, these electric fires are available in multiple sizes, each equipped with the latest Chromalight® LED technology, offering a selection of striking fuel beds and ambient effects. In addition to single-sided inset fires, eReflex, Avanti, and Fusion models can also be configured as a multi-sided or corner fire to suit a range of installations.

To further enhance your space, most of our electric fires are compatible with an optional mood lighting system. Extending up to 6 metres, the added ambient lighting is perfect for adding a touch of glamour around shelving or your TV. There are 13 distinct lighting colours and a gradually changing spectrum mode, allowing you to complement both your fire and your home's décor seamlessly.

 GAZCO ·  onyx ·



*Gazco eReflex 150RW
installed as three-sided
with optional mood
lighting kit*





eMotiv 64



Gazco Limited, Spitfire Avenue, Skypark, Clyst Honiton,
Exeter, Devon, EX5 2FR

Trade Sales

Tel: 01392 261999 • Email: info@gazco.com

gazco.com   



Find your retailer

You can find and support your nearest
retailer by visiting: www.gazco.com/retailers

A member of the Stovax Group © Copyright Gazco Ltd 2024 E & O E

GZEMOTIV1124

